



UNEP



WCMC

Monitoring Biodiversity and Health & Well-being

Working together to track global biodiversity trends

Monika MacDevette

COHAB, Galway



UNEP-WCMC ...

- ❑ more than 25 years delivering products and services to support biodiversity conservation
- ❑ a partnership between UNEP and a UK-based charity, WCMC 2000
- ❑ located in Cambridge, UK

Mission: To evaluate and highlight the many values of biodiversity and put authoritative biodiversity knowledge at the centre of decision-making





UNEP



WCMC

- ❑ Acknowledged as UNEP's centre of excellence for biodiversity
- ❑ Support to biodiversity-related Conventions (CBD, CITES, CMS & agreements, AEWA, Ramsar, World Heritage)
- ❑ Key contributor to global assessments (GEO-4), MA, GBO-2
- ❑ Partner network with other UNEP centres of excellence: UNEP Risoe, UCC Water, UNEP GRID-Arendal



Setting the scene

- Sharing experiences
- Raising awareness
- Influencing international processes
 - 1st Interministerial Conference on Health & Biodiversity in Africa
 - Climate change and REDD
- More than government - making the business case
 - Industry and government's response in Japan



Health Security through Healthy Environments



World Health
Organization



Republique
Gabonaise



United Nations
Environment Programme

First Interministerial Conference on Health and Environment in Africa

Health Security through Healthy Environments

- Joint WHO-UNEP conference of Ministers of Health and of Environment in Africa
- Government of Gabon as active partner
- Basis for ministerial discussions is the ecosystems approach to human health
- Opportunity for outcomes of COHAB2 to inform and influence African ministers
- 26-29 August 2008, Libreville, Gabon



UNEP



WCMC

Links to Climate Change Agenda

- REDD - Reducing Emissions from Deforestation and Degradation
- Need to accrue multiple benefits to be sustainable
 - Multiple benefits related to ecosystems services
 - Opportunities for outcomes of COHAB2 to inform and share best practices, determine baselines and indicators
 - Announcement by Government of Norway to provide NOK2.7 billion for climate change impacts in the world's tropical forests

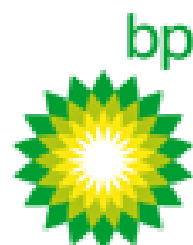
Biodiversity and Business

- UNEP-Finance Initiative
 - Voluntary initiative with the financial services sector - more than responsible investment strategies
- UNEP-WCMC Proteus Partnership with business based on the World Database on Protected Areas (WDPA)
 - Interest from the automotive industry and Government of Japan to create guidelines for business and biodiversity on partnership models and sound biodiversity information
 - UK business forum - beyond climate change - what next?

Proteus Partners



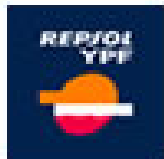
vodafone



ORACLE



HSBC



RIO TINTO



UNEP



WCMC

Biodiversity and Genetic Conservation

The loss of genetic diversity may threaten food security: just 14 animal species account for 90 per cent of all livestock production, and 30 crops dominate global agriculture, providing an estimated 90 per cent of the world's calories. People's search for energy - even biofuels - and their use of it (demand is projected to grow at least 53 per cent by 2030) are key factors in the accelerating loss of biodiversity, which in turn affects human health by altering disease patterns and susceptibility to disease outbreaks. (GEO-4)



2010 Convention on Biological Diversity target

“ . . . achieve a significant reduction of the current rate of biodiversity loss at global, national and regional levels as a contribution to poverty alleviation and to the benefit of all life on earth.”

- Adopted at CBD COP6
- Endorsed by WSSD and UNGA
- Incorporated as a new target within MDG7



The 2010 Biodiversity Indicators Partnership (2010BIP)

- Global initiative to track progress towards achieving the 2010 biodiversity target.
- Collaboration of organisations and agencies from around the world involved in indicator development and delivery, communications and outreach, information management, and use of indicators.
- The leading source of global indicator information to help decision-makers reduce biodiversity loss.

2010 Biodiversity Indicators Partners



World Health Organisation



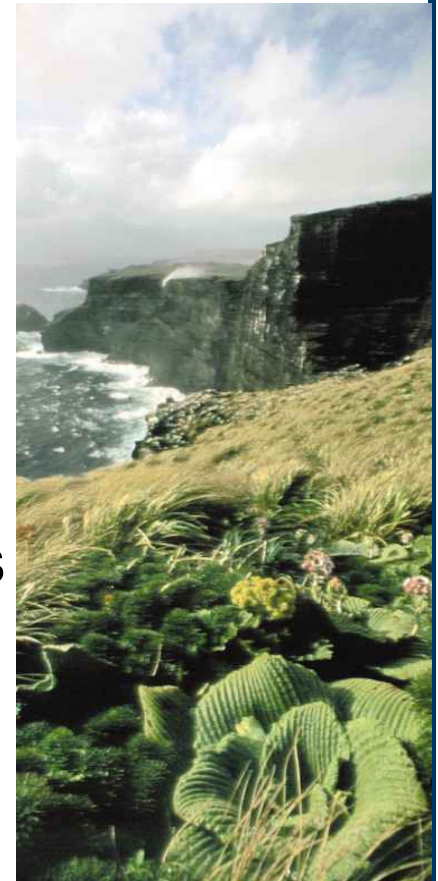
International Nitrogen Initiative



The 2010 Biodiversity Indicators Partnership

Framework for targets and indicators:

- Biodiversity components
- Sustainable use
- Threats to biodiversity
- Ecosystem integrity, good and services
- Traditional knowledge, innovations, practices
- Access and benefit sharing
- Resource transfers, both ODA and technology

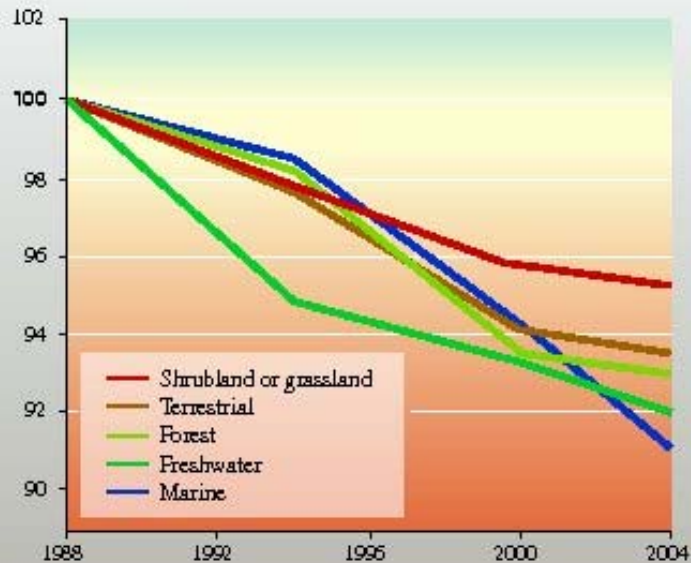


(COP Decision VII/30 and SBSTTA Recommendation X/5)

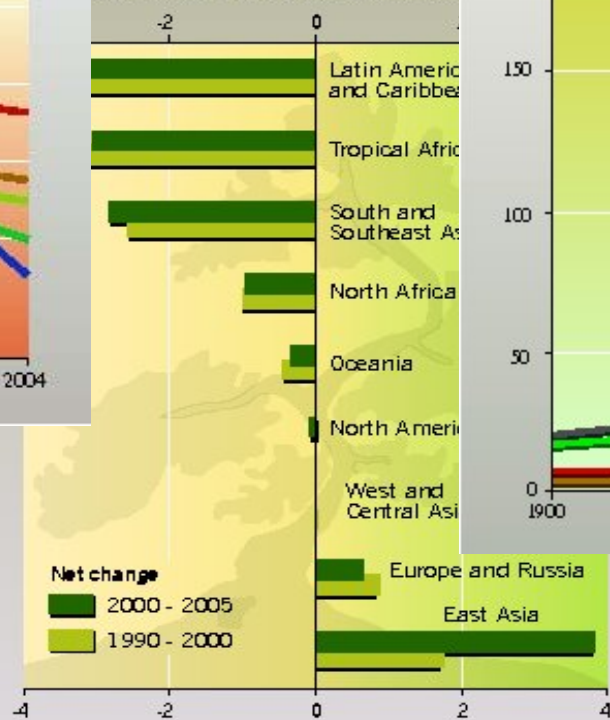
The 2010 Biodiversity Indicators Partnership

Some are available...

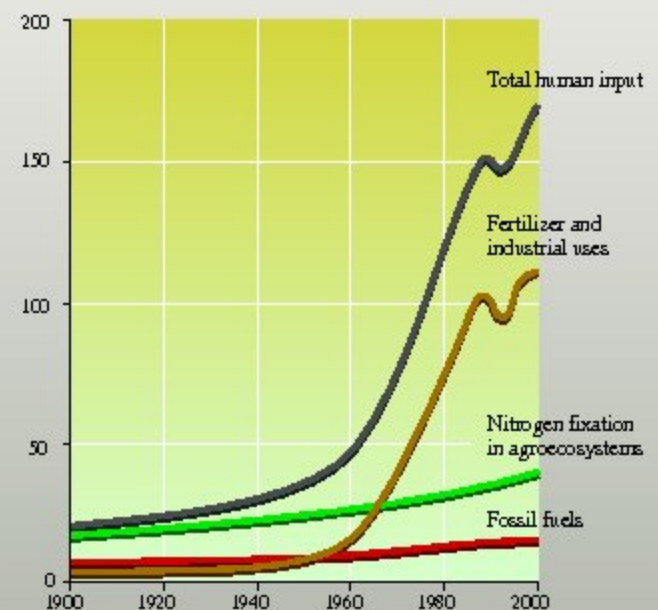
Index 100 in 1988



Net change in forest area in million ha



Teragrams of anthropogenic nitrogen created per year



UNEP



WCMC

The 2010 Biodiversity Indicators Partnership

Some are not currently available

- Status of indigenous and traditional knowledge
- Status of access and benefit sharing
- Biodiversity for food and medicine
- Indicators of sustainable use of biodiversity
- Health and well-being of communities dependent on biodiversity



(© Barsch/WWF Germany)



Links to health and well-being

- Ecosystem loss degrades services

- Provisioning
- Regulating
- Cultural



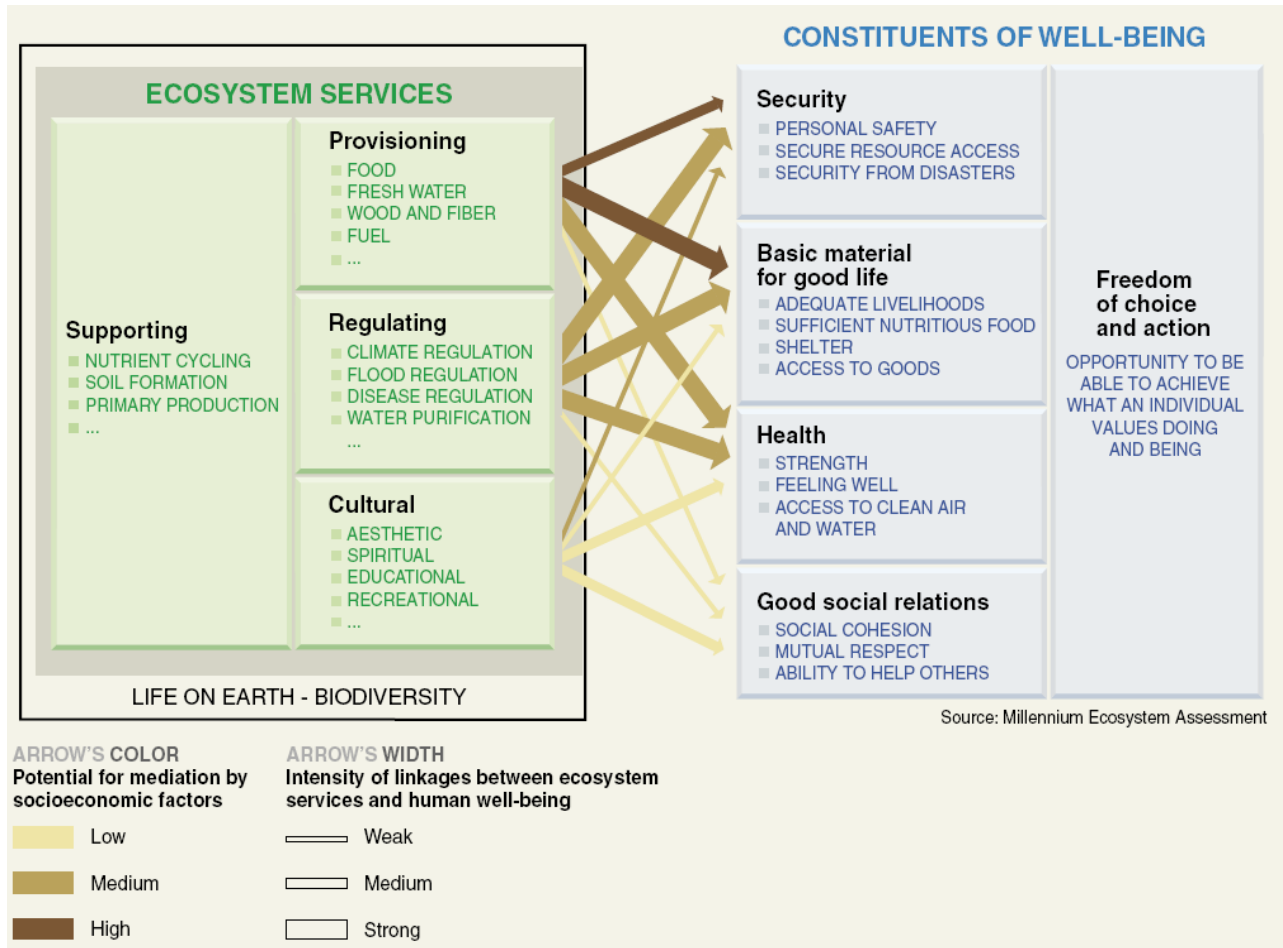
- All of which impact human well-being

- Health
- Vulnerability
- Opportunities
- Livelihoods

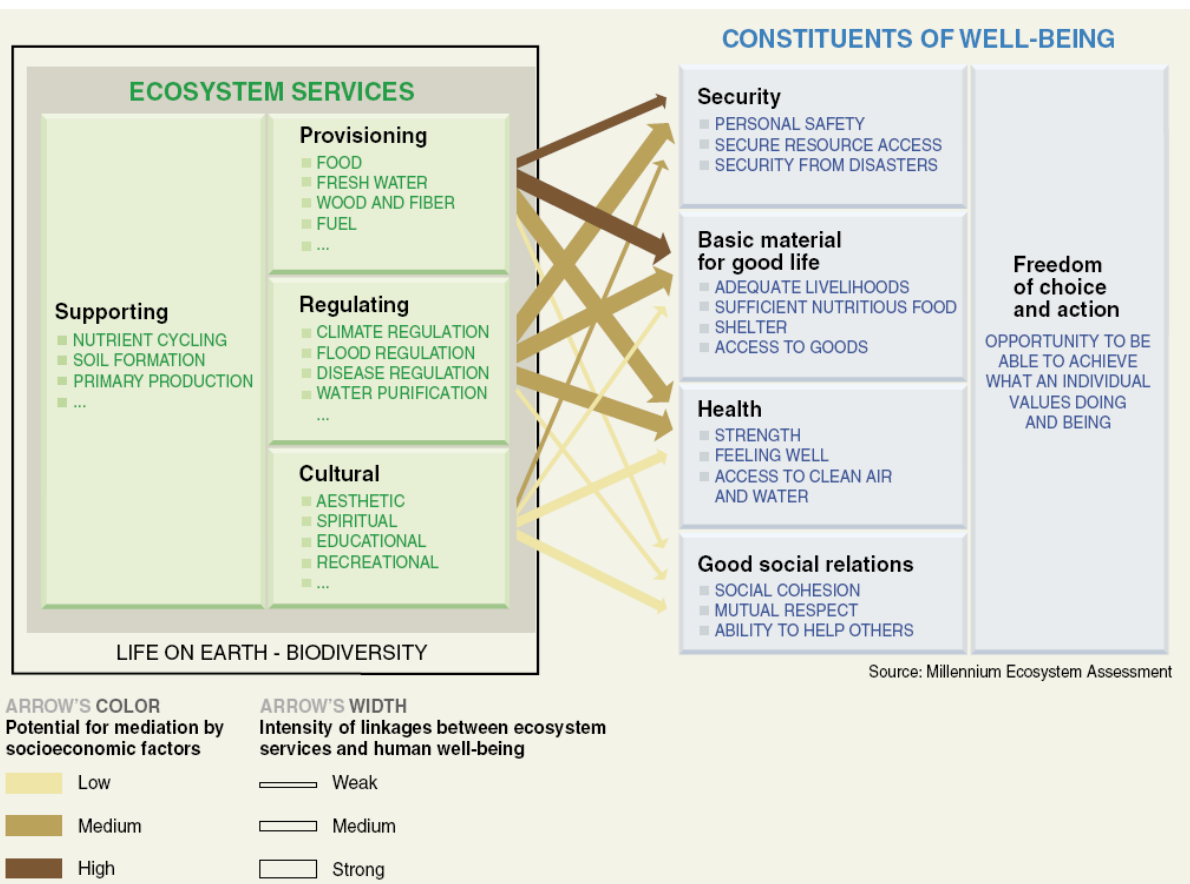


- Disproportionate burden on the poor

Biodiversity and Health Linkages



Many 2010BIP indicators link to health and well-being



- Proportion of fish stocks in safe biological limits (FAO)
- Genetic diversity of terrestrial domesticated animals (FAO)
- Nitrogen deposition (INI)
- Invasive Alien Species (GISP)
- Marine Tropic Index (Fisheries Centre, UBC)
- Biodiversity for food and medicine (FAO & IUCN)
- River fragmentation and flow regulation (TNC)

GETTING TRENDY: MONITORING LINKAGES BETWEEN BIODIVERSITY AND HEALTH

COHAB Side Event - Wednesday

- Discuss the strategic importance of indicator monitoring to health and biodiversity
- Discuss options for indicators on the health and well-being of communities who depend directly on local ecosystem goods and services
- Propose a selection of these indicators for further development
- Develop a set of proposals for these indicators as a basis for their development following the workshop



A world where biodiversity counts

www.unep-wmc.org

www.twentyten.net